

3 a

$$\frac{2 \times 2}{5 \times 2}$$

$$\frac{3 \times 2}{5 \times 2}$$

$$\frac{4}{10}$$

$$\frac{6}{10}$$

$\frac{1}{2}$

$$\frac{5}{10}$$

3b.  $\frac{1}{4}$   $\frac{1}{2}$

$4x+1$   $\frac{5}{4}$   $\frac{3}{2}$   $2x+1$

$\frac{5}{4}$   $\frac{3}{2}$

$\frac{5 \times 2}{4 \times 2}$   $\frac{6 \times 2}{4 \times 2}$

Je trouve le même dénominateur

On veut un dénominateur plus grand

$\frac{10}{8}$   $\frac{12}{8}$

$\frac{11}{8}$

$\frac{13}{8}$

$\frac{1}{2} = \frac{4}{8}$

$$3c) \quad \frac{7 \times 4}{10 \times 4} \quad \frac{3 \times 10}{4 \times 10}$$

$$\frac{28}{40} \quad \frac{30}{40}$$

$$\frac{29}{40}$$

4 a) fraction  $\rightarrow$  fraction  $\rightarrow$  decimal  
 $\frac{2}{5} \xrightarrow{\times 2} \frac{4}{10} = 0,4$

b)  $\frac{4}{9} = 0,\overline{4}$

c)  $\frac{13}{25} \xrightarrow{\times 4} \frac{52}{100} = 0,52$

d)  $\frac{32}{50} \xrightarrow{\times 2} \frac{64}{100} = 0,64$

e)  $\frac{16}{99} = 0,\overline{16}$

$$5 \text{ a. } 0,7 \quad \frac{7}{10}$$

$$b \quad 0,4 \quad \frac{4}{9}$$

$$c) \quad 0,056 = \frac{56}{1000} = \frac{28}{500} = \frac{14}{250} = \frac{7}{125}$$

$$d.) \quad 0,01 \quad \frac{1}{100}$$

$$e.) \quad 0,26 = \frac{26}{100} = \frac{13}{50}$$

$$2,2 \times 1,4$$

$$1 + 1 = 2$$

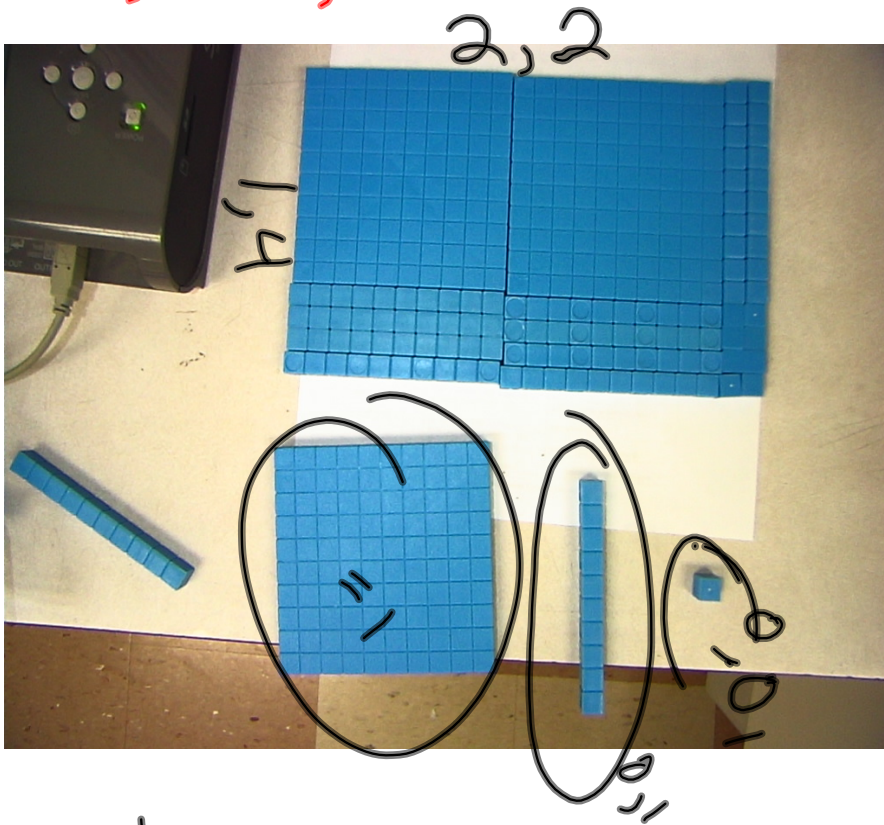
estimation

$$2 \times 1$$

$$= 3$$

$$\begin{array}{r} 22 \\ \times 14 \\ \hline 88 \\ + 220 \\ \hline 3,08 \end{array}$$

$$2,2 \times 1,4$$

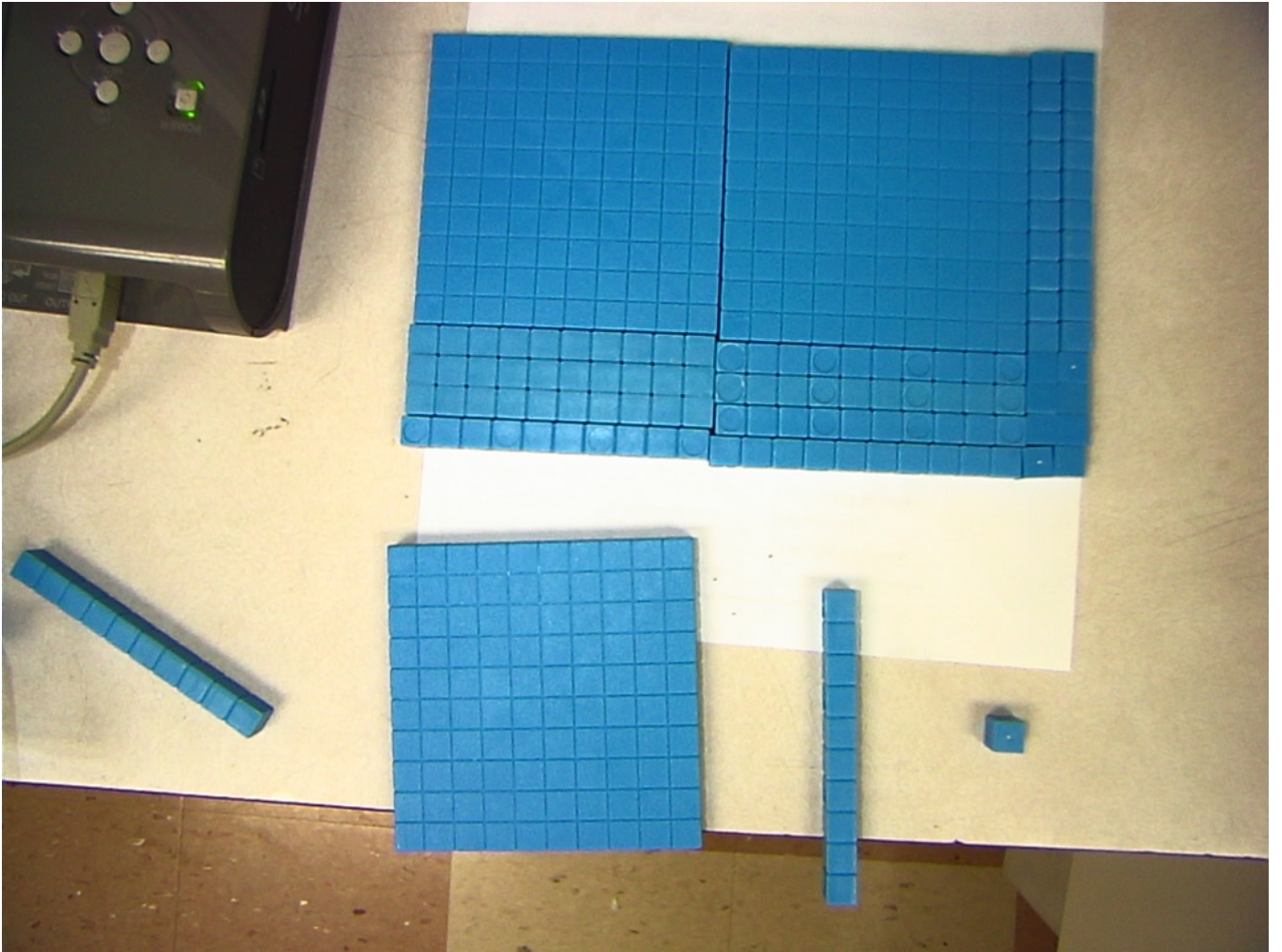


$$1 \times 2 = 2$$

$$0,1 \times 10 = 1$$

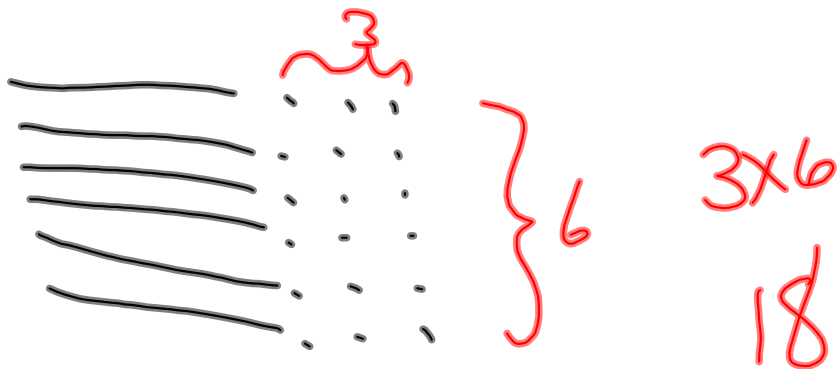
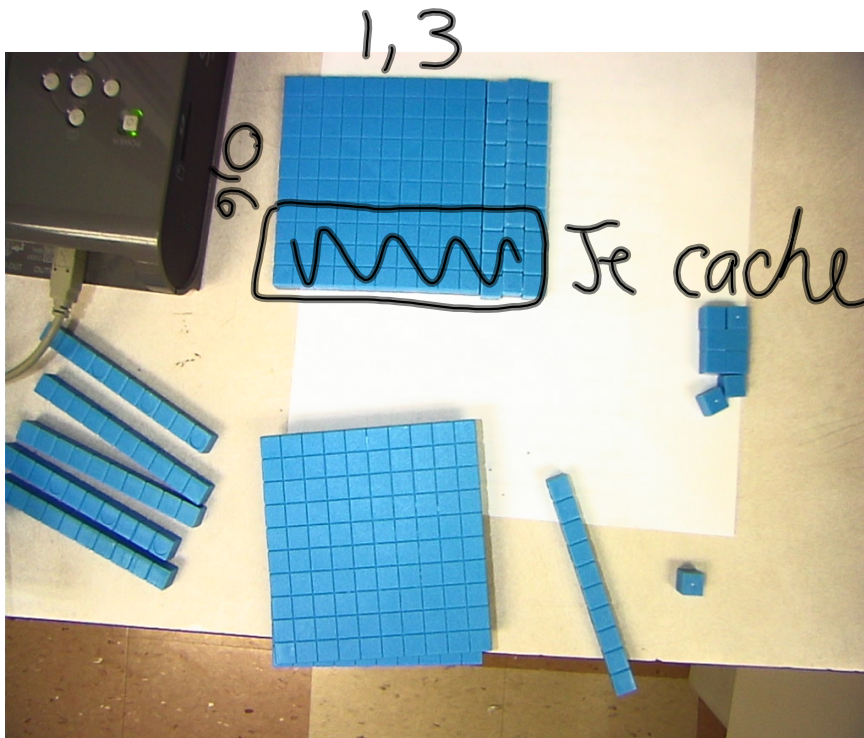
$$0,01 \times 8 = 0,08$$

$$\hline 3,08$$





$$1,3 \times 0,6$$



$$1 \times 0 = 0$$

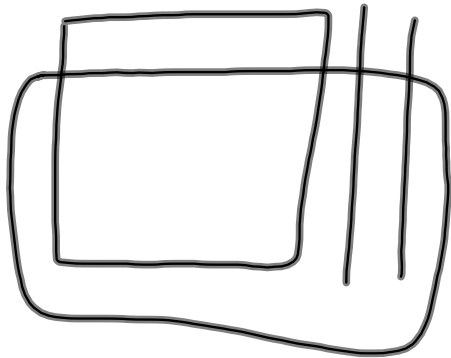
$$0,1 \times 6 = 0,6$$

$$0,01 \times 18 = 0,18$$

---

$$0,78$$

$$1,2 \times 0,2$$



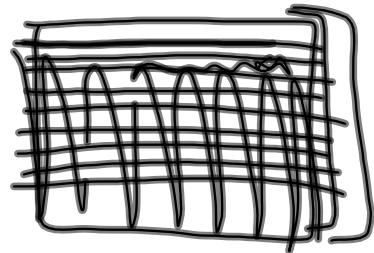
Je cache  
8 ranger

||

alors

== ::

$$\begin{array}{r} 1 \times 0 = 0 \\ 0,1 \times 2 = 0,2 \\ 0,01 \times 4 = 0,04 \\ \hline 0,24 \end{array}$$



3.5

$$1,4 \div 0,2$$

$0,2 \cdot \sqrt{14}$

*(Note: The number 0,2 is circled in red, and there are green arrows pointing to the decimal points in both 0,2 and 1,4.)*

On ne  
peut  
pas

$2 \sqrt{14}$

*(Note: The number 2 is written in black, and the square root symbol and 14 are written in green.)*

$$52,1 \div 0,9$$

Devoir