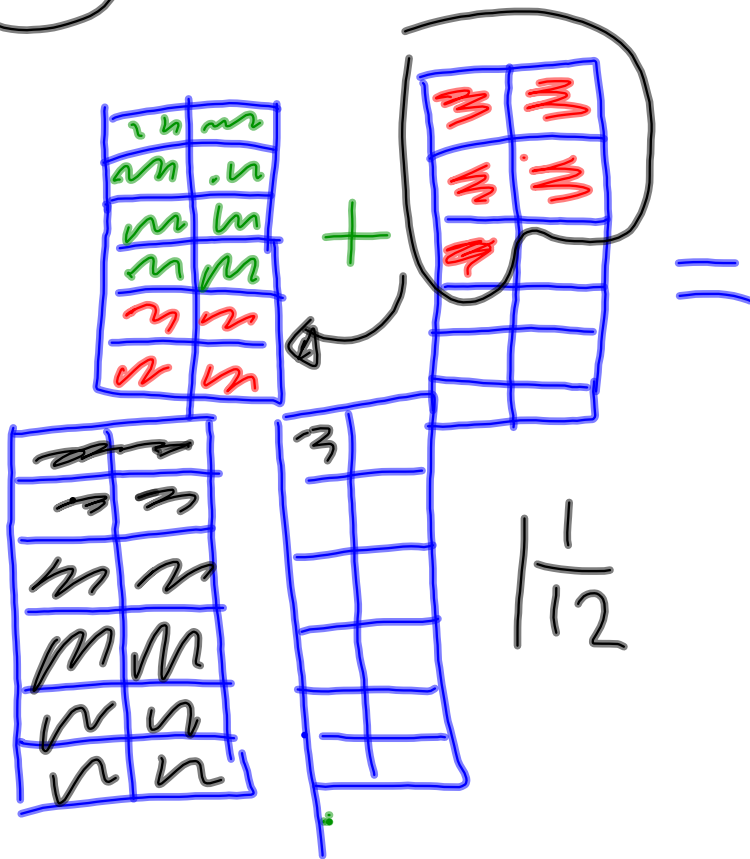


1.a) ○



$$\frac{2}{3} + \frac{5}{6}$$



$$\frac{1}{5} + \frac{3}{5} = \frac{4}{5}$$

$$\frac{3 \times 5}{4 \times 5} + \frac{1 \times 4}{5 \times 4} = \frac{15}{20} + \frac{4}{20}$$

4, 8, 12, 16, 20
5, 10, 15, 20

1

$$\frac{15}{20} + \frac{4}{20} = \frac{19}{20}$$